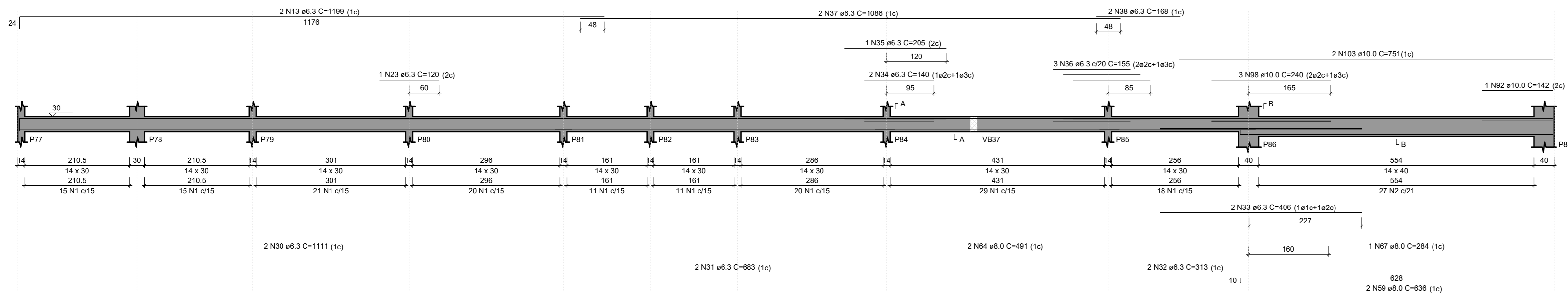


VB24

ESC 1:50



SEÇÃO A-A

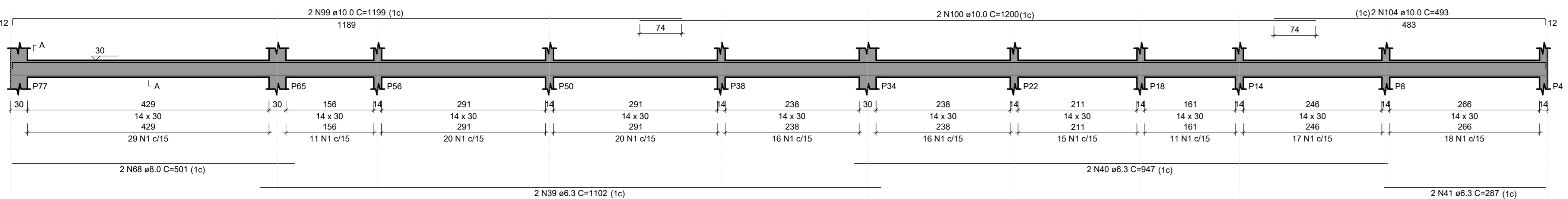
ESC 1:25

SEÇÃO B-B

ESC 1:25

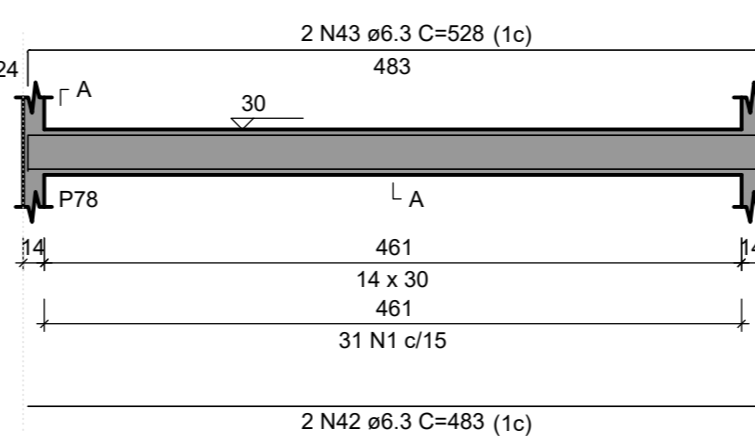
VB25

ESC 1:50



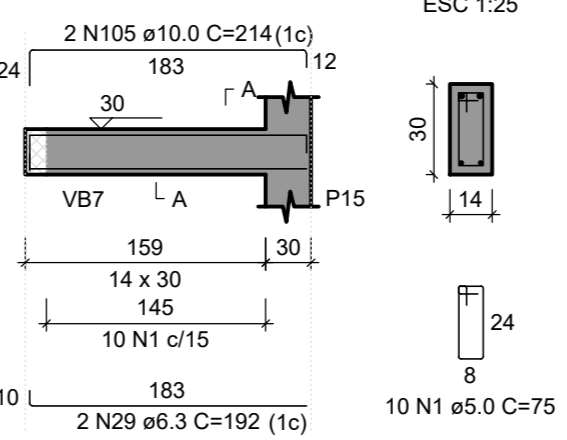
VB26

ESC 1:50



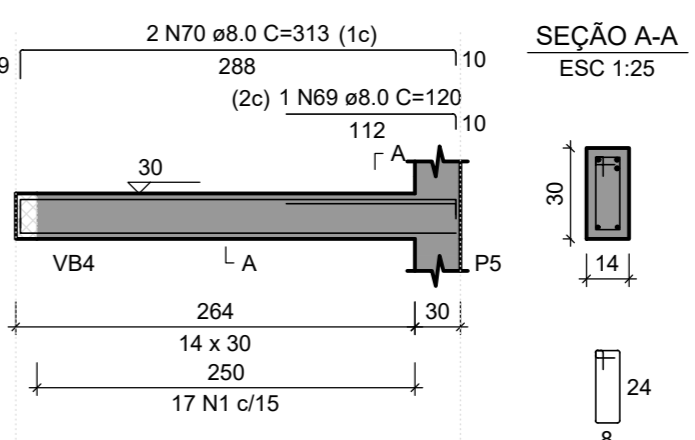
VB27

ESC 1:50



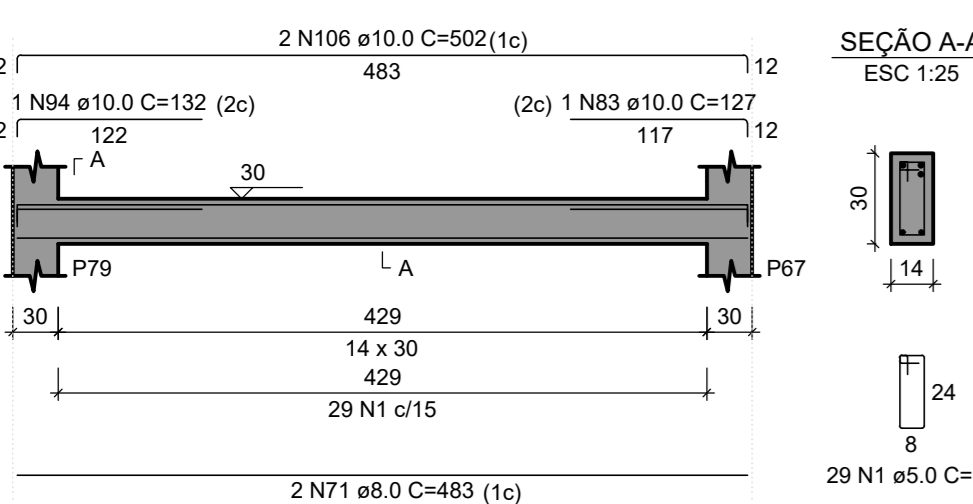
VB28

ESC 1:50



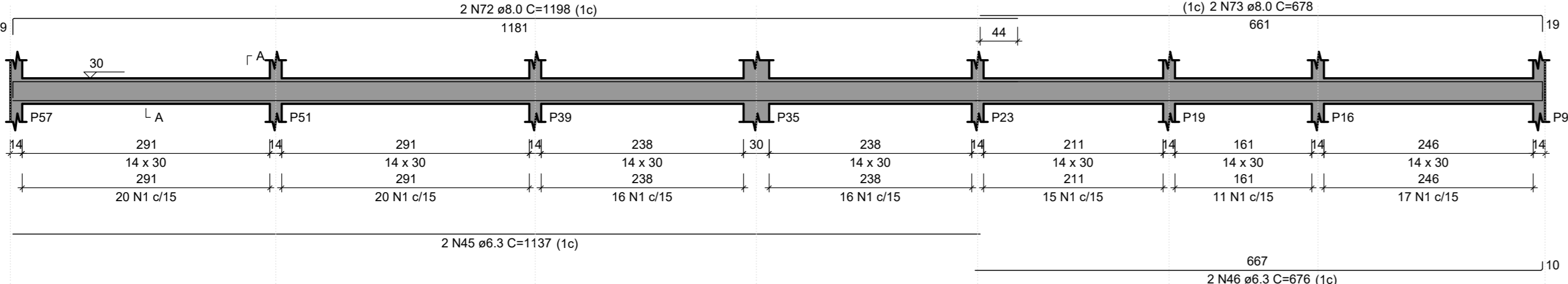
VB29

ESC 1:50



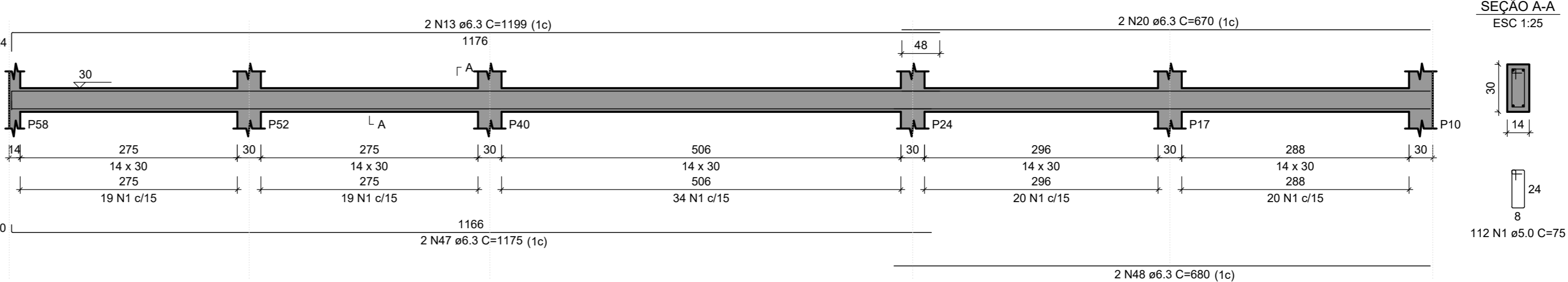
VB30

ESC 1:50



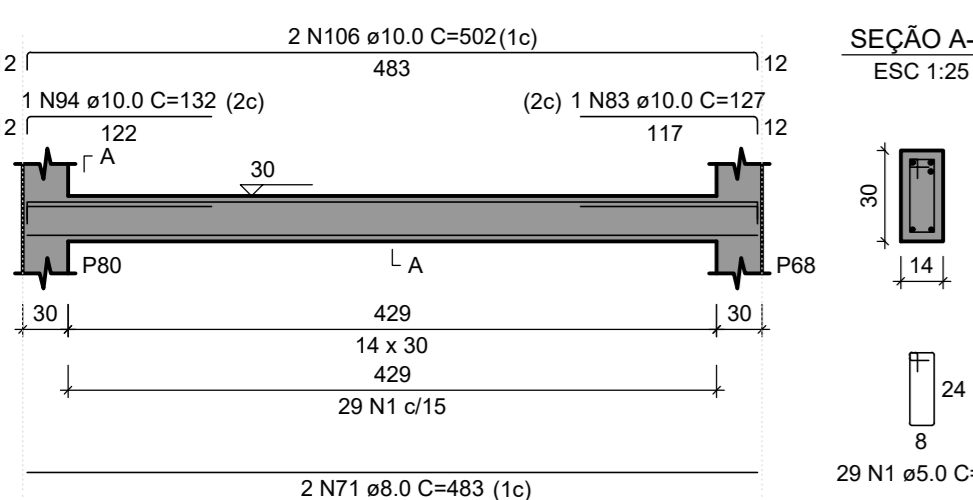
VB31

ESC 1:50



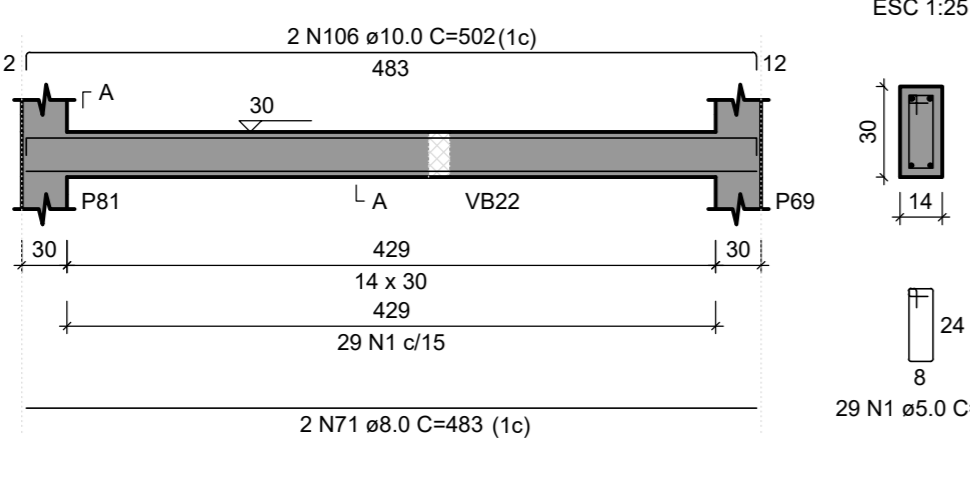
VB32

ESC 1:50



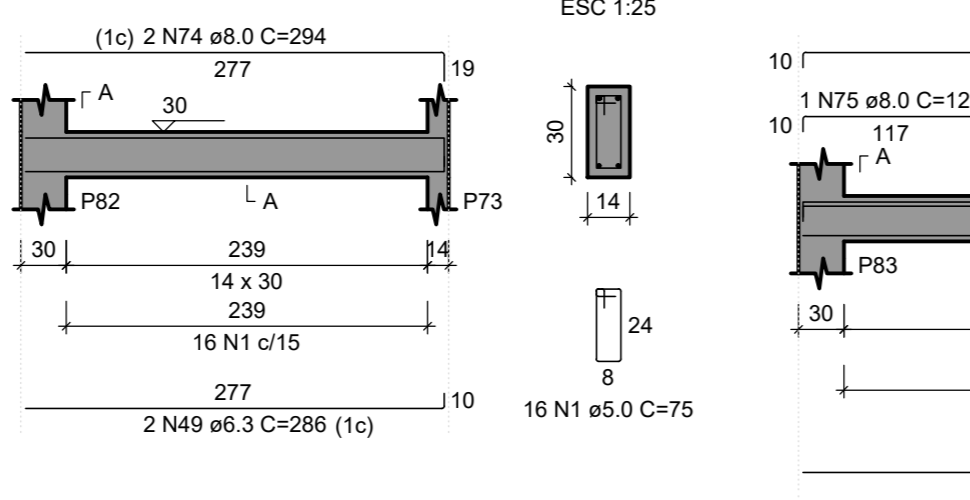
VB33

ESC 1:50



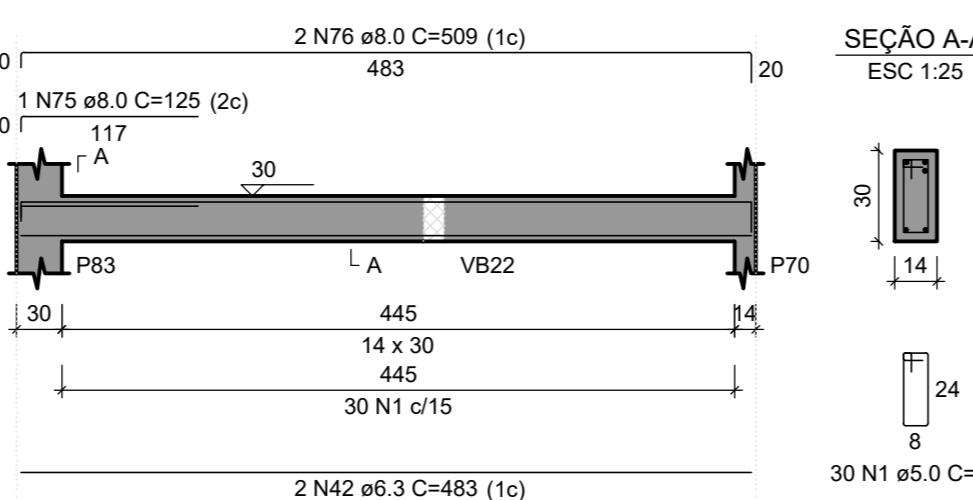
VB34

ESC 1:50



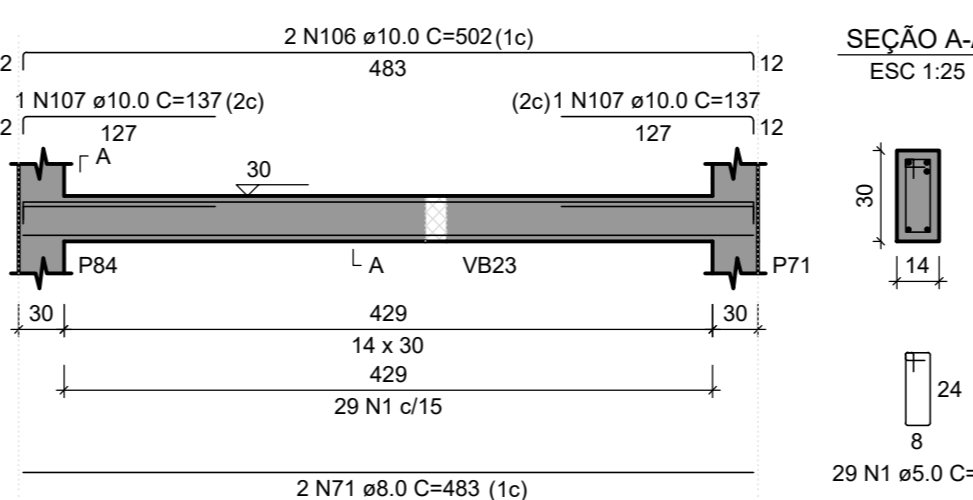
VB35

ESC 1:50



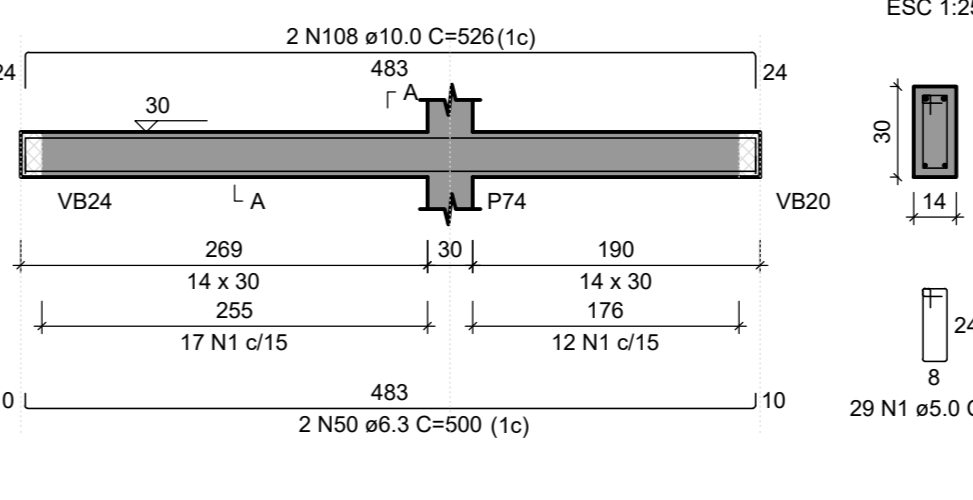
VB36

ESC 1:50



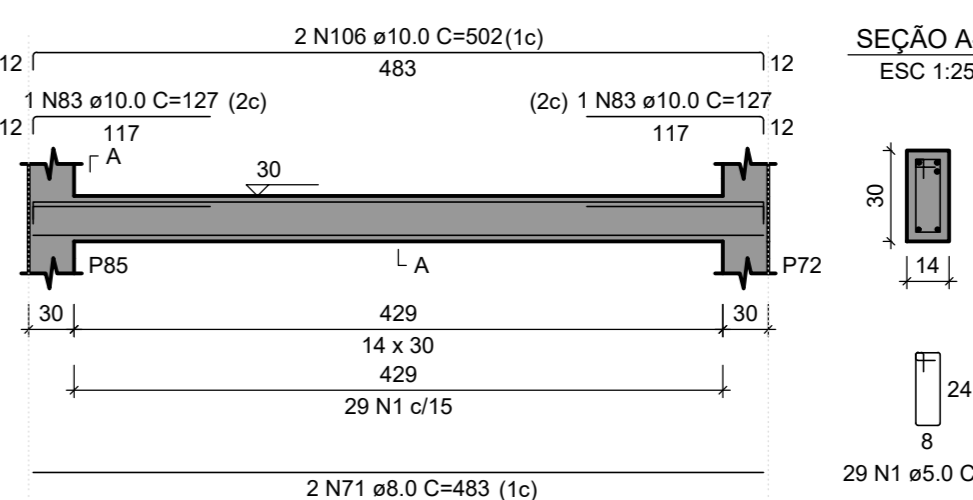
VB37

ESC 1:50



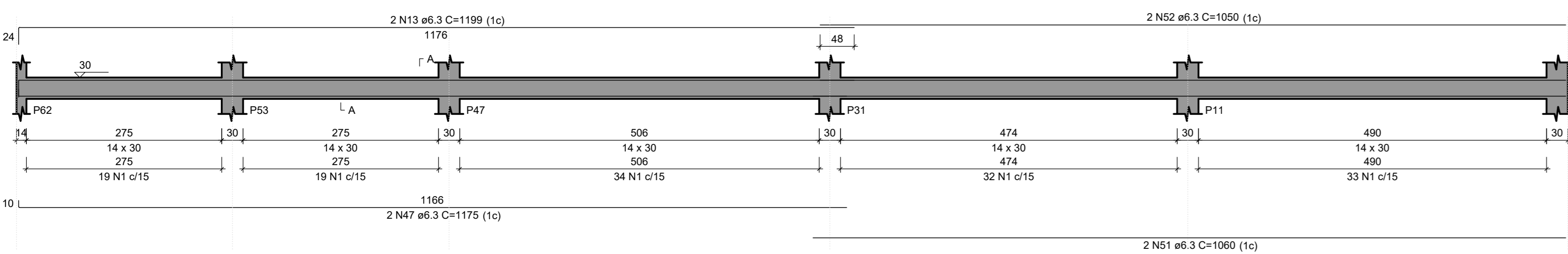
VB38

ESC 1:50



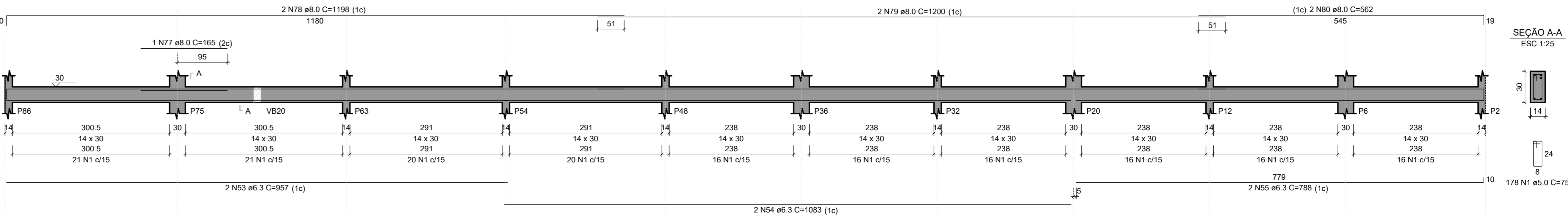
VB39

ESC 1:50



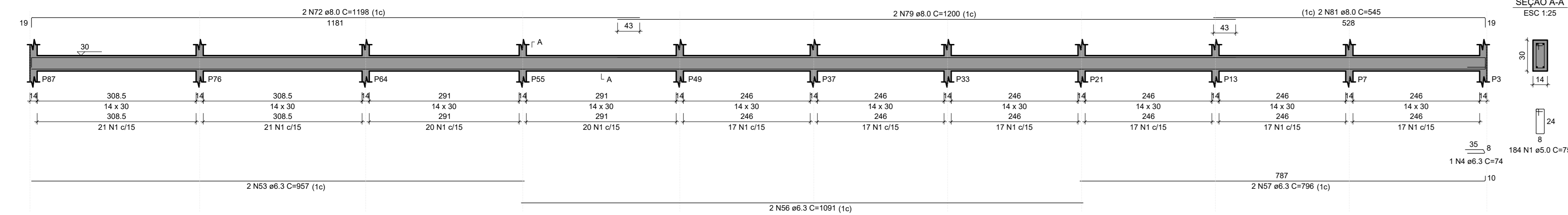
VB40

ESC 1:50



VB41

ESC 1:50



RELAÇÃO DO AÇO DAS VIGAS BALDRAME

ACO	N	DIAM (mm)	QUANT	C.UNIT (cm)	C.TOTAL (cm)
CABO	1	5.0	2291	73	171823
CABO	2	5.0	189	95	17855
CABO	3	6.3	1	425	425
CABO	4	6.3	2	74	148
CABO	5	6.3	8	277	2216
CABO	6	6.3	8	664	5312
CABO	7	6.3	8	460	2768
CABO	8	6.3	2	184	368
CABO	9	6.3	6	473	2838
CABO	10	6.3	6	1028	6168
CABO	11	6.3	4	720	2880
CABO	12	6.3	4	518	2072
CABO	13	6.3	4	557	2228
CABO	14	6.3	4	518	2072
CABO	15	6.3	2	1045	2090
CABO	16	6.3	2	1097	2194
CABO	17	6.3	2	442	884
CABO	18	6.3	2	300	600
CABO	19	6.3	2	135	270
CABO	20	6.3	2	135	270
CABO	21	6.3	2	120	240
CABO	22	6.3	2	160	320
CABO	23	6.3	2	160	320
CABO	24	6.3	2	206	412
CABO	25	6.3	2	206	412
CABO	26	6.3	2	375	750
CABO	27	6.3	2	1111	2222
CABO	28	6.3	2	313	626
CABO	29	6.3	2	406	812
CABO	30	6.3	2	140	280
CABO	31	6.3	2	205	410
CABO	32	6.3	2	155	310
CABO	33	6.3	2	168	336
CABO	34	6.3	2	1102	2204
CABO	35	6.3	2	947	1894
CABO	36	6.3	2	451	902
CABO	37	6.3	2	451	902
CABO	38	6.3	2	1131	2262
CABO	39	6.3	2	297	594
CABO	40	6.3	2	678	1356
CABO	41	6.3	2	1175	2350
CABO	42	6.3	2	680	1360
CABO	43	6.3	2	500	1000
CABO	44	6.3	2	1080	2160
CABO	45	6.3	2	1050	2100
CABO	46	6.3	2	788	1576
CABO	47	6.3	2	1091	2182
CABO	48	6.3	2	788	1576
CABO	49	6.3	2	636	1272
CABO	50	6.3	2	203	406
CABO	51	6.3	2	636	1272
CABO	52	6.3	2	237	474
CABO	53	6.3	2	285	570
CABO	54	6.3	2	473	946
CABO	55	6.3	2	451	902
CABO	56	6.3	2	228	456
CABO	57	6.3	2	284	568
CABO	58	6.3	2	501	1002
CABO	59	6.3	2	120	240
CABO	60	6.3	2	313	626
CABO	61	6.3	2	483	966
CABO	62	6.3	2	1198	2396
CABO	63	6.3	2	678	1356
CABO	64	6.3	2	294	588
CABO	65	6.3	2	125	250
CABO	66	6.3	2	509	1018
CABO	67	6.3	2	165	330
CABO	68	6.3	2	1188	2376
CABO	69	6.3	2	1200	2400
CABO	70	6.3	2	582	1164
CABO	71	6.3	2	545	1090
CABO	72	6.3	2	82	164
CABO	73	6.3	2	127	254
CABO	74	6.3	2	170	340
CABO	75	6.3	2	872	1744
CABO	76	6.3	2	628	1256
CABO	77	6.3	2	157	314
CABO	78	6.3	2	217	434
CABO	79	6.3	2	137	274
CABO	80	6.3	2	202	404
CABO	81	6.3	2	492	984
CABO	82	6.3	2	142	284
CABO	83	6.3	2	207	414
CABO	84	6.3	2	132	264
CABO	85	6.3	2	152	304
CABO	86	6.3	2	212	424
CABO	87	6.3	2	636	1272
CABO	88	6.3	2	240	480
CABO	89	6.3	2	1199	2398
CABO	90	6.3	2	491	982
CABO	91	6.3	2	751	1502
CABO	92	6.3	2	403	806
CABO	93	6.3	2	502	1004
CABO	94	6.3	2	137	274
CABO	95	6.3	2	220	440
CABO	96	6.3	2	220	440
CABO	97	6.3	2	807	1614

RESUMO DO AÇO

ACO	DIAM (mm)	C.TOTAL (m)	QUANT + 0% (Barras)	PESO + 0% (kg)
CABO	6.3	292.5	83	243.1
CABO	8.0	369.6	31	145.8
CABO	10.0	415.9	30	266.4
CABO	12.5	18.3	2	17.7
CABO	5.0	1887.8	188	230.5

PESO TOTAL (kg) 663
CABO 292.5

Volume de concreto (C-25) = 16.25 m³
Área de forma = 284.28 m²

CONTRATADA: CONTINENTAL ASSESSORIA CNPJ Nº: 26.103.470/0001-08 AVENIDA MESITA FERREIRA, Nº 72A - 1º ANDAR, CIDADE SANTA MARIA JUAZEIRO DO NORTE - CE, CEP: 33600-000		CONTRATANTE: JURAMENTO CNPJ Nº: 18.017.346/0001-28 RUA ANTONIO MARIA CORREIA, Nº 43 - CENTRO JUAZEIRO DO NORTE - CE, CEP: 33600-000	
RESPONSÁVEL TÉCNICO: GERALDO DIAS FERREIRA JÚNIOR CREA/CAU: 248.842/D - MG		RESPONSÁVEL LEGAL: PREFEITO(A) MUNICIPAL DE JURAMENTO MOREIRA NO MUNICÍPIO DE JURAMENTO - MG	
CONSTRUÇÃO DA CRECHE PROFESSORA ALFREDDINA DIAS MOREIRA NO MUNICÍPIO DE JURAMENTO - MG			
DESCRIÇÃO: DETALHAMENTO DE VIGAS BALDRAME.			
ENDEREÇO DA OBRA: AVENIDA SÃO JOÃO, S/N, BAIRRO NENZINHA BORGES, JURAMENTO-MG			
MUNICÍPIO: JURAMENTO/MG		DATA INICIAL: 08 DE OUTUBRO DE 2025	
FASE DO PROJETO: INICIAL	ART/RRT:	DATA DA REV.:	
REFERÊNCIA DO PROJETO: JUR.0153	ESCALA: INDICADAS	Nº REVISÃO: 00	05/12